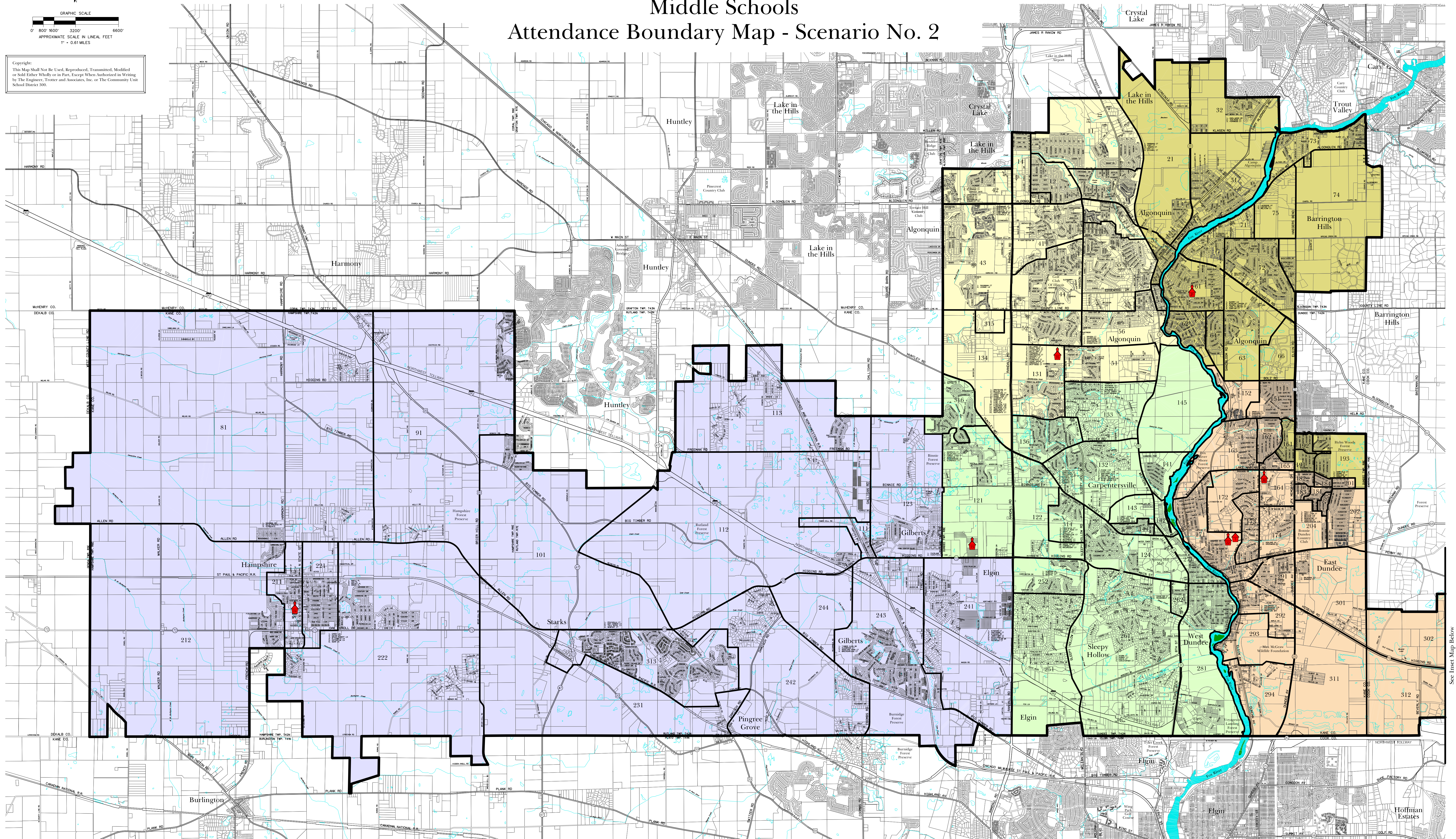


This Map is for Graphical Purposes Only.
For Verification of Actual Attendance
Boundaries, Contact School District 300
Transportation Department.

Community Unit School District 300

This Map is for Graphical Purposes Only.
For Verification of Actual Attendance
Boundaries, Contact School District 300
Transportation Department.

Middle Schools Attendance Boundary Map - Scenario No. 2



Legend

Administration/Special Facilities

District 300 Board of Education
Administration Center
300 CLEVELAND AVENUE
CARPENTERSVILLE, ILLINOIS 60110
PHONE: 815.426.1300
WWW.D300.IL.GOV

Oak Ridge School
729 LAKE MARIAN ROAD
CARPENTERSVILLE, ILLINOIS 60110-2010
PHONE: 815.426.4002
FAX: 815.426.4174

Community Unit School District 300 - Middle Schools

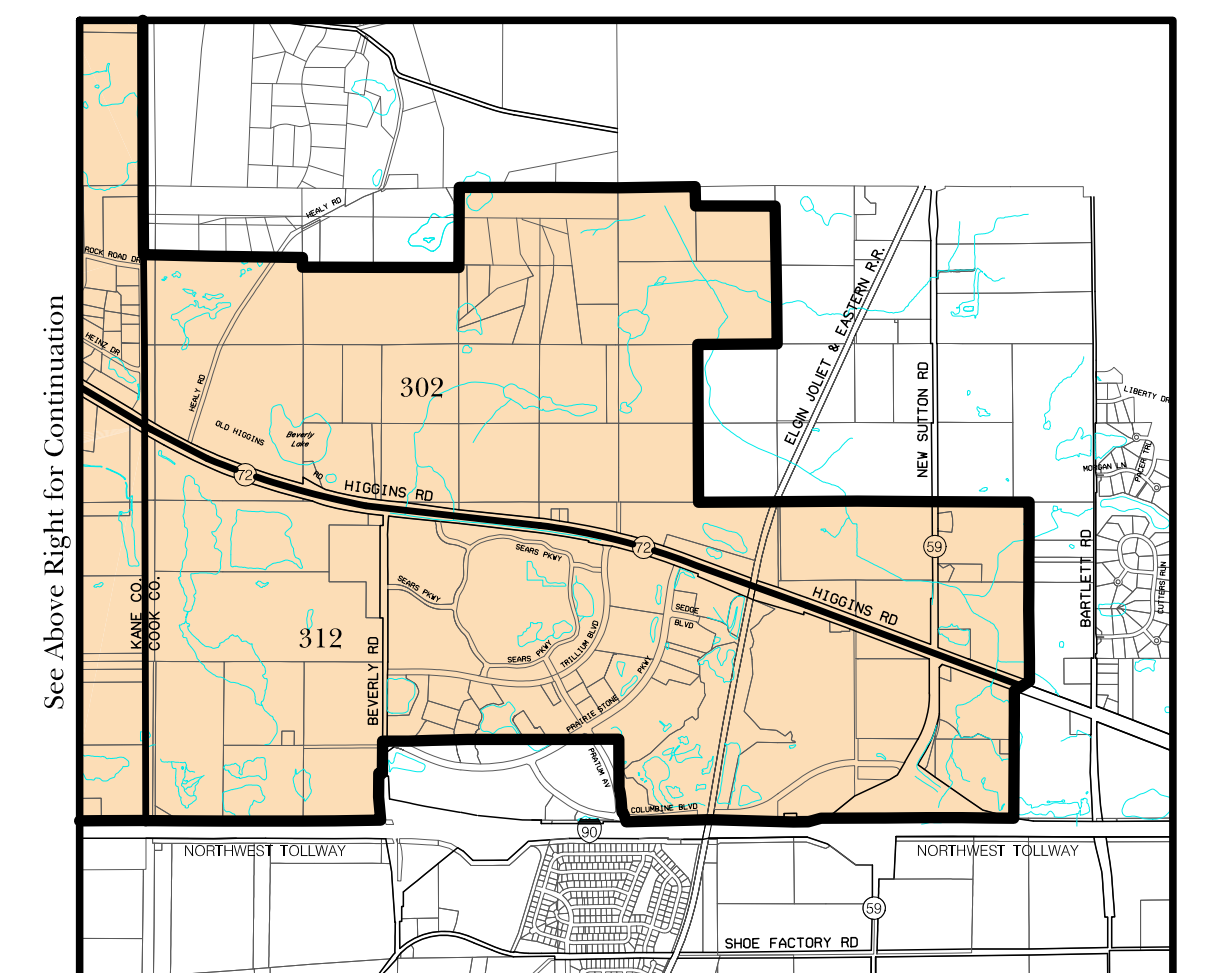
Algonquin Middle School
30 LONGWOOD DRIVE
ALGONQUIN, ILLINOIS 60110-2000
PHONE: 815.426.2145
FAX: 815.426.2147

Carpentersville Middle School
100 CLEVELAND AVENUE
CARPENTERSVILLE, ILLINOIS 60110-2100
PHONE: 815.426.1300
FAX: 815.426.1101

Dundee Middle School
37460 ROUTE 72
WEST DUNDEE, ILLINOIS 60150-0500
PHONE: 815.426.1645
FAX: 815.426.0000

Hampshire Middle School
600 SOUTH STATE STREET
HAMPSHIRE, ILLINOIS 60140-0000
PHONE: 815.426.1227
FAX: 815.426.1050

Westfield Community Middle School
2100 SLEEPY HOLLOW ROAD
ALGONQUIN, ILLINOIS 60102-6000
PHONE: 815.426.2100
FAX: 815.426.2100



Prepared By:
TROTTER ASSOCIATES
Engineers and Surveyors
1000 N. W. 10th Ave., Suite 100
Tampa, FL 33607
Date: February 10, 2002
Revised: January 26, 2008